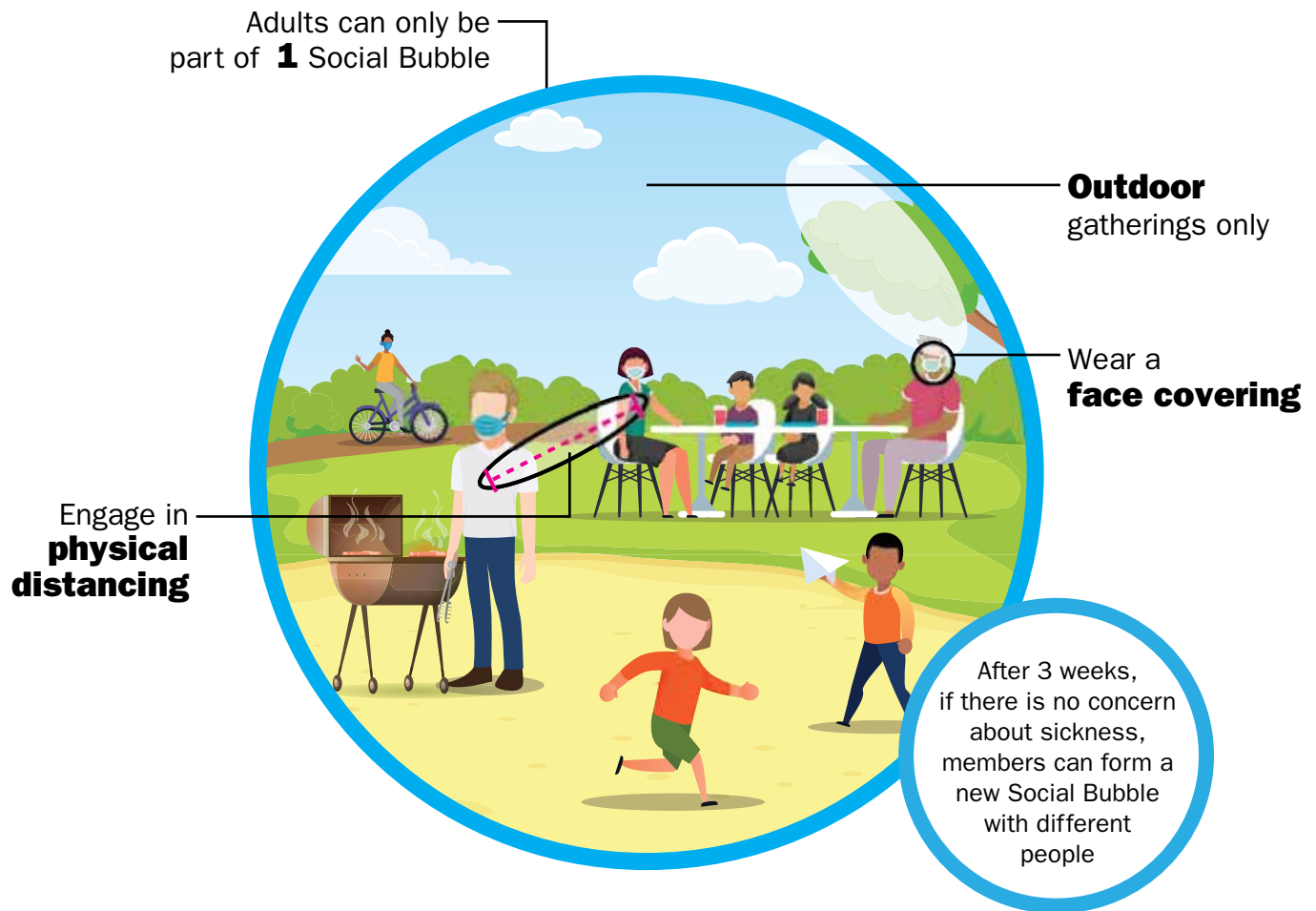
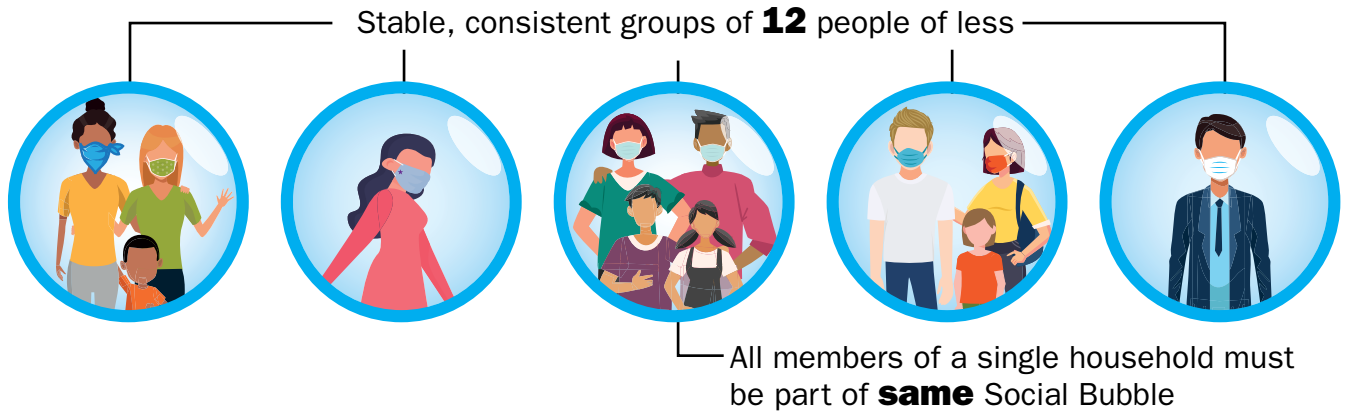


WHAT'S A SOCIAL BUBBLE?

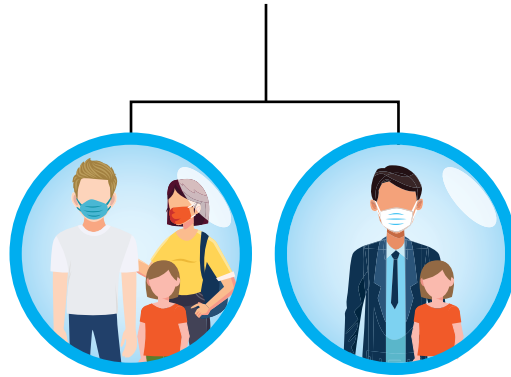
As Marin reopens, your social circle can expand slightly to include others outside your household. Stable groups of 12 people or less who have

agreed to limit their social activities to only each other for at least three weeks can gather together outdoors. This is called a "social bubble."



SOCIAL BUBBLES & KIDS

A child in **shared custody** can be in a Social Bubble for each parent or guardian



Children may also be part of **1** other stable group of children—**either** childcare or an extracurricular activity, such as a summer camp.

Childcare and camps must still follow previously announced rules for limited group sizes and social distancing